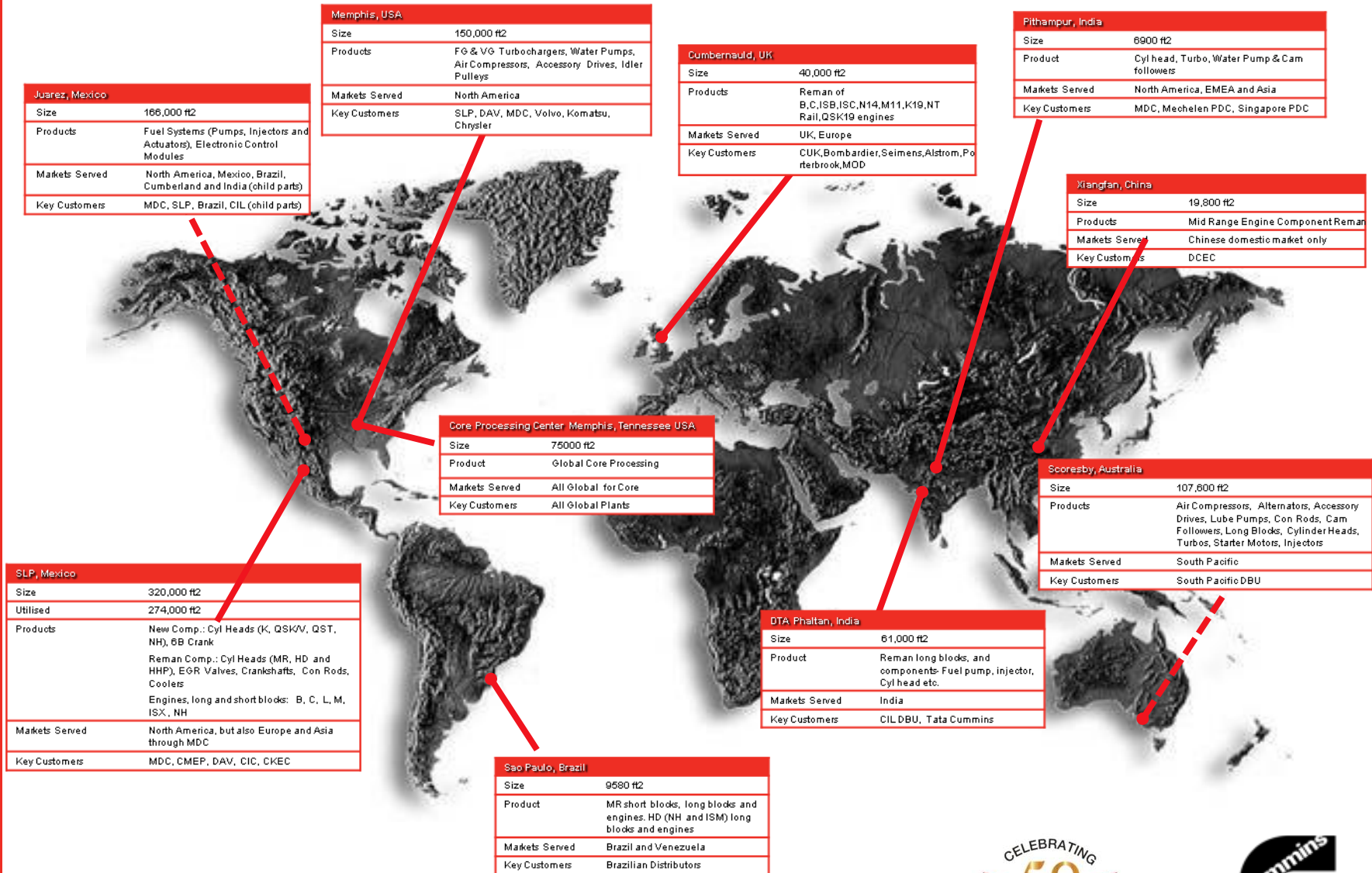




# ReCon Value Proposition



# Global Remanufacturing Network



# Remanufacturing in India

## ReCon India Plant

### Phaltan

- Area 82000 square feet
- 125 employees
- 13 re-manufacturing lines
- Components – turbochargers, cylinder heads, connecting rods, water pumps, PT pumps, lube oil pumps, cam follower, injectors, long blocks (MR & HD)



# Why Cummins Remanufacturing

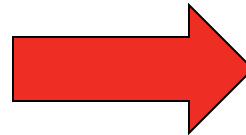


## High Performance

- As good as new
- Updated to the latest technology
- Meet Cummins specifications
- Best –in-class warranty of 6 months/ 1800 hours

## Reliability & Efficiency

- 100% Genuine factory remanufactured products
- Assurance of meeting engine's specifications



# ReCon Promise



## Value for money

- Cost-effective means of extending the life of Cummins-powered equipment
- Reduces downtime for customers



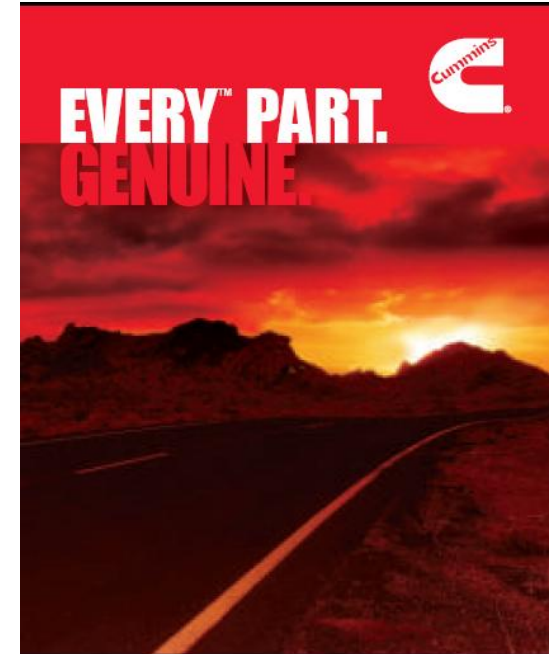
## Availability

- Reduced Repair Event Cycle Time (RECT)
- Components are available off - the -shelf



## Sustainability

- 85% less energy as compared to new
- Savings result in greenhouse gas (GHG) reductions
- Reclaim components



# ReCon Offerings



Connecting Rod



Cylinder Head



ReCon Engine



Injector



Water Pump



Turbocharger



Long Block



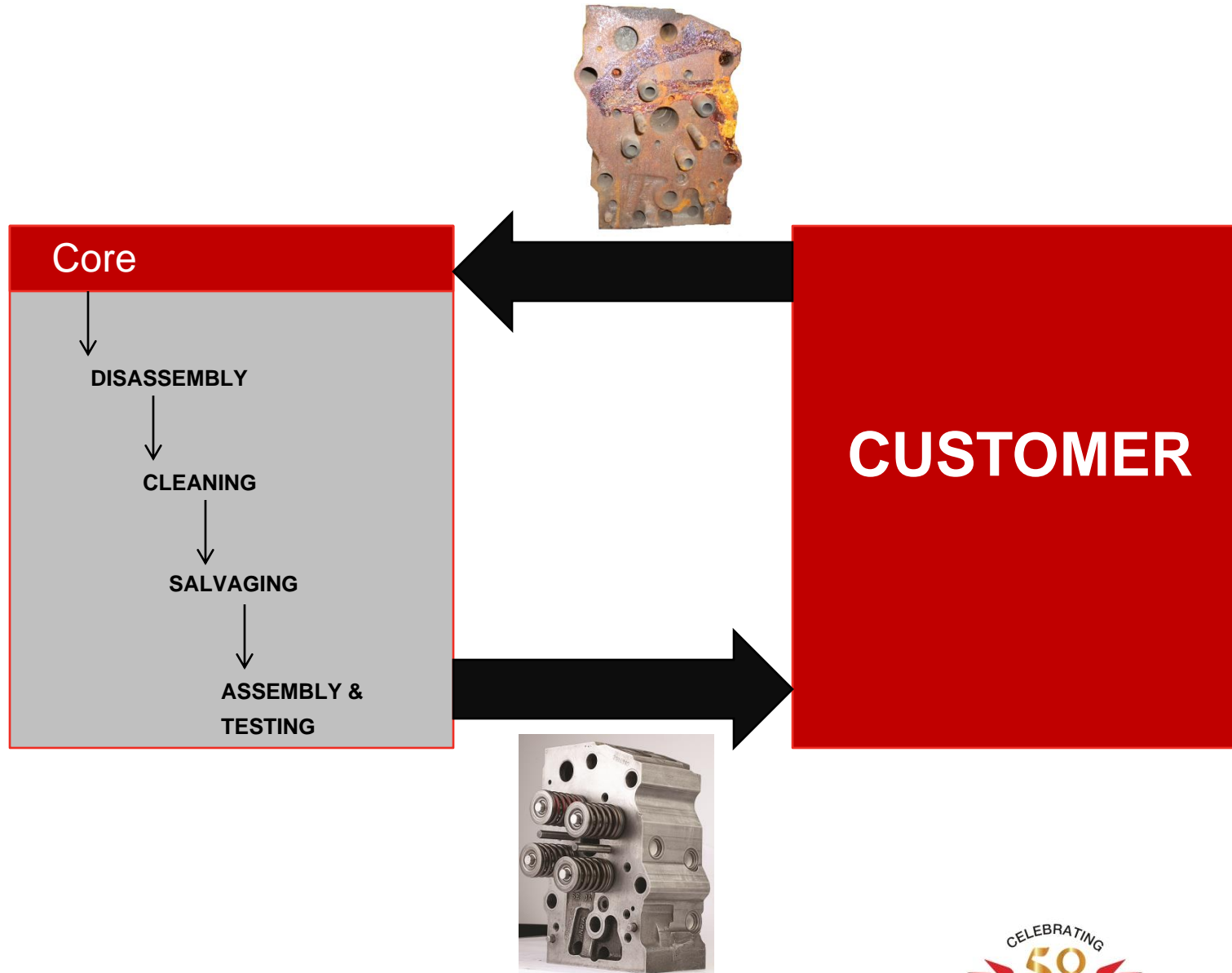
PT Pump



Lube Pump



# Remanufacturing Process



# Remanufacturing Process



## Disassembly

- Core received as intact assemblies are disassembled to component level
- “Unsalvageable” parts are scrapped and salvageable components are routed to cleaning

1



## Cleaning

- Optimal cleaning with minimum chemical consumption
- Fully automated, safe and eco-friendly process
- Itching action and combination of thermal, mechanical & chemical washing

2



## Inspection

- Methods: Visual, Optical, Comparator, Dimensional, Magnaflux, Liquid penetration, Electrical properties, Eddy current, Leak, other functional tests
- Disposition based on reuse standards

3



## Manufacturing

- Remanufacturing technology provides highest quality at lowest cost.
- Methods: Machining, Sleeving, Welding, Stitching, Undersized and Oversized parts, Material Addition (Laser Cladding, Thermal Spray)

4



## Assembly & Test

- New material supplements core
- Some parts 100% new (gaskets, seals)
- Sim test and dry air leak test for all gallery checking

5





# Cleaning Process



## Primary Cleaning

- High Pressure jet at 200 bars
- Removes carbon and rust

## Paint Removal

- Highly effective and eco friendly chemical
- 100% paint removal

## Carbon Removal

- Special chemical process
- Helps maintain essential HP and fuel efficiency of the engine

## Degreasing and rust removal

- Combination of chemicals used in the earlier two processes
- Helps increase life of the turbo and maintain fuel efficiency

## Effective removal of dust, carbon, grease particles that result in

- Optimum performance
- Longer life
- Better fuel efficiency
- No risk of emission

Incoming Core



Core after Cleaning process



# Millipore Testing

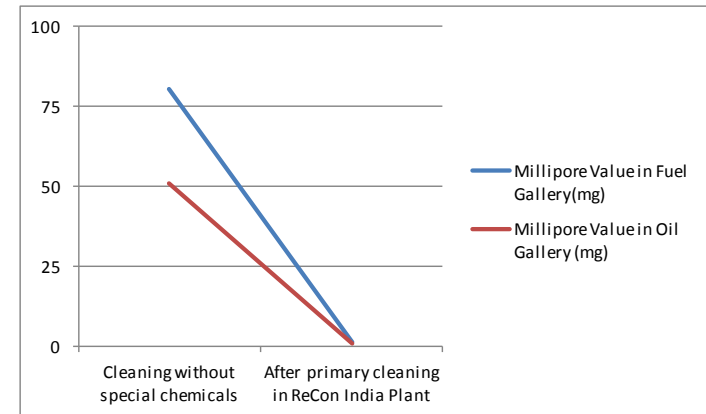


## ReCon India Quality Lab

- Higher Millipore Value indicates that galleries are obstructed with grease, dust and carbon

	Cleaning without special chemicals	After primary cleaning in ReCon India Plant
Millipore Value in Fuel Gallery(mg)	80.3	1.4
Millipore Value in Oil Gallery (mg)	51.1	1

- Ensures minimum allowable foreign particle leading to promised performance of the ReCon Cylinder Head
- Blocking of galleries prevented



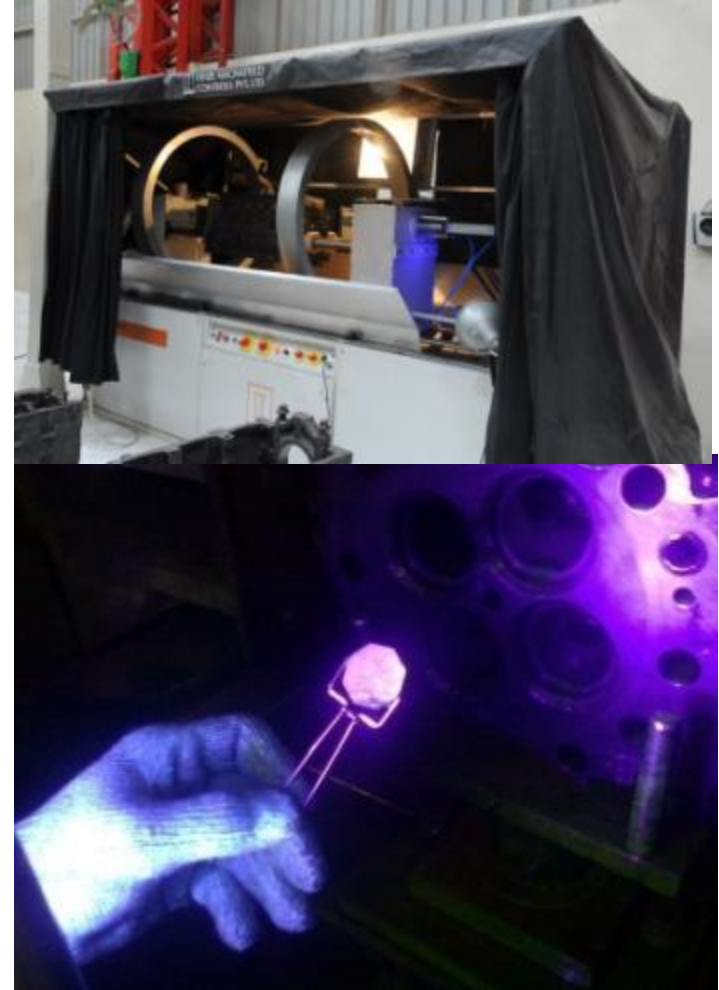
# Magnetic Particle Crack Detection



- Cracks usually found on the valve bridge areas
  - Not visible to the naked eye
  - Can lead to early life failures
- Magnetic particle crack detection helps detect cracks using UV light

*If not done*

- *Some cracks may not be detected leading to product failure*



# Quality

- In-house state-of-the-art quality lab for in-process checks, calibration, layout and final inspection

Highlight	Advantage
Precision equipment & instruments	Consistent and infallible product performance
Quality checks at every step	Robust remanufacturing processes
Millipore testing facility for cleanliness inspection	Attain highest degree of component cleaning
Rigorous PPAP (Product Parts Approval Process) for every new product/part introduction	Every part meets Cummins factory specifications
QMS aligned to TS16949 standards	Optimum product quality



# ReCon Components

- Remanufactured-not just rebuilt
- State-of-the-art cleaning technology
- Sophisticated inspection procedures & equipment
- Computer controlled machining for consistent high quality
- Every part restored to Cummins specifications or replaced with genuine Cummins new parts



# ReCon Advantage

- High Performance - 'same as new'
- Reduced Downtime with off-the-shelf availability
- Best-in-class warranty
- Highly Reliable and Durable
- Value for money



# Cummins Core Policy



# ReCon Is Easy To Do Business With

- CORE = **C**ash **O**n **R**eturn
- Our simple visual inspection policy ensures you get immediate core credit.
  - No bill backs
  - No guesses about the value
  - Opportunity for technology upgrade



## Trident Services Private Limited

Authorized Cummins Dealer

SR. No 116, Hissa No: 9/6 & 9/7, Mumbai Bangalore Highway,  
Warje, Pune - 411058

**Customer Care No: 020 66266222 / 23**

**After Office Hours : 91 9850908146**

**Email - [customercare@tridents.net](mailto:customercare@tridents.net)**

